

Instructions for Collecting Dust by AccuCloth™

AccuCloth dust collection was first developed by Mycometrics. The AccuCloth™ is one of the most effective dust collecting cloths on the market. It provides an alternative way to collect dust for mold-specific quantitative PCR (qPCR). Use AccuCloth™ to take dust samples where the standard vacuuming procedure cannot be used, such as wood and linoleum floors.

For a **comprehensive** mold history, please read & follow the directions below:

1. Before starting the process, identify the surfaces/areas covered with visible dust. Try to **avoid areas where you see visible mold(s) growth**, as this will bias the result to show particular mold species instead of a general overview.

The following areas can be sampled:

- Wood and tile floors.
 - Surfaces of tables, chairs, bookshelves, cabinets, refrigerator etc.
 - On the top of the door, cubical divider, blackboard, door-frames, window-frames and the top surfaces of fluorescent lights.
 - On top of electronic devices such as monitor screens, printers, computers and telephones.
 - Window sills, upper walls, and other untouched areas above the floor.
 - Surfaces of air vent grilles or inside air vents.
 - Do not use AccuCloth on rugs and carpets.
2. **Please wear clean gloves** before handling the wiping cloths. Take an AccuCloth out of its plastic bag and rub it on the selected surface(s) to be tested. For multiple surface areas, hold the cloth and rub the first area. The dust should be visible on the cloth. Move to next selected area and rub the dusty surface onto the next clean area of the cloth, and so on. **Combining basement, garage, or crawl space dusts with upstairs living space samples are strongly discouraged.** Please collect enough dust samples so that we can see it and retrieve the dust from it (ie. Dark spots covering at least 50% of the cloth).
 3. Fold up the cloth and reseal it in its plastic bag. Write your name/information on the bag with a permanent marker.
 4. Make a note of the sampled areas & fill in all the necessary information on the Chain-Of-Custody (COC) form.
 5. Send the sample, the completed COC form, and the payment form (check or credit card) back to Mycometrics for testing.

***Note: The samples you want in one analysis should be on one cloth.** If you want (for example) three analyses, then the dust for each analysis should be on three different cloths. Each cloth should be sealed in a separate plastic bag. Please note that the price increases as the number of analyses increases.

AccuCloth™ Sample Collecting Process

(1) Identify the surfaces/areas



(2) Wear clean gloves!!!



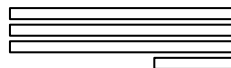
(2) Take out Cloth* & WIPE



(3) Fold Cloth & Bag it (Label the bag)



(4) Fill the Chain-Of-Custody form



(5) Mail back to Mycometrics

9 Deer Park Dr. Suite K-18
Monmouth Junction, NJ 08852

➤ Enclose check or credit card information.